

**Year 12 Mathematics Applications
Test 1 2018**

Calculator Assumed
Bivariate Data

STUDENT'S NAME

MARKING KEY

DATE: Thursday 1st March

TIME: 45 minutes

MARKS: 45

INSTRUCTIONS:

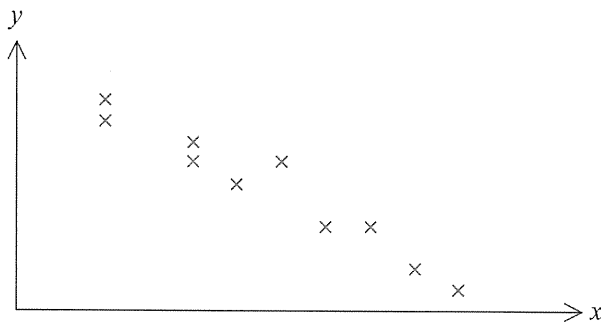
Standard Items: Pens, pencils, drawing templates, eraser

Special Items: Three calculators, notes on one side of a single A4 page (these notes to be handed in with this assessment)

Questions or parts of questions worth more than 2 marks require working to be shown to receive full marks.

1. (3 marks)

A scatterplot is drawn for the relationship between variables x and y .



(a) Comment on the relationship between x and y .

[2]

Strong, negative ✓✓

(b) Give a practical example for the relationship which is modelled in the scatterplot above.

[1]

Any reasonable response ✓

2. (21 marks)

A Fantasy Football participant decided to determine whether there was a relationship between the transfer cost, in millions of pounds, of a player and the total points they scored for the season. He collected the following data:

Player Cost	10.4	12	9	8.6	5.9	10.7	12.8	7	9.2	11.3	12
Points Scored	145	162	135	126	101	138	167	136	139	140	162

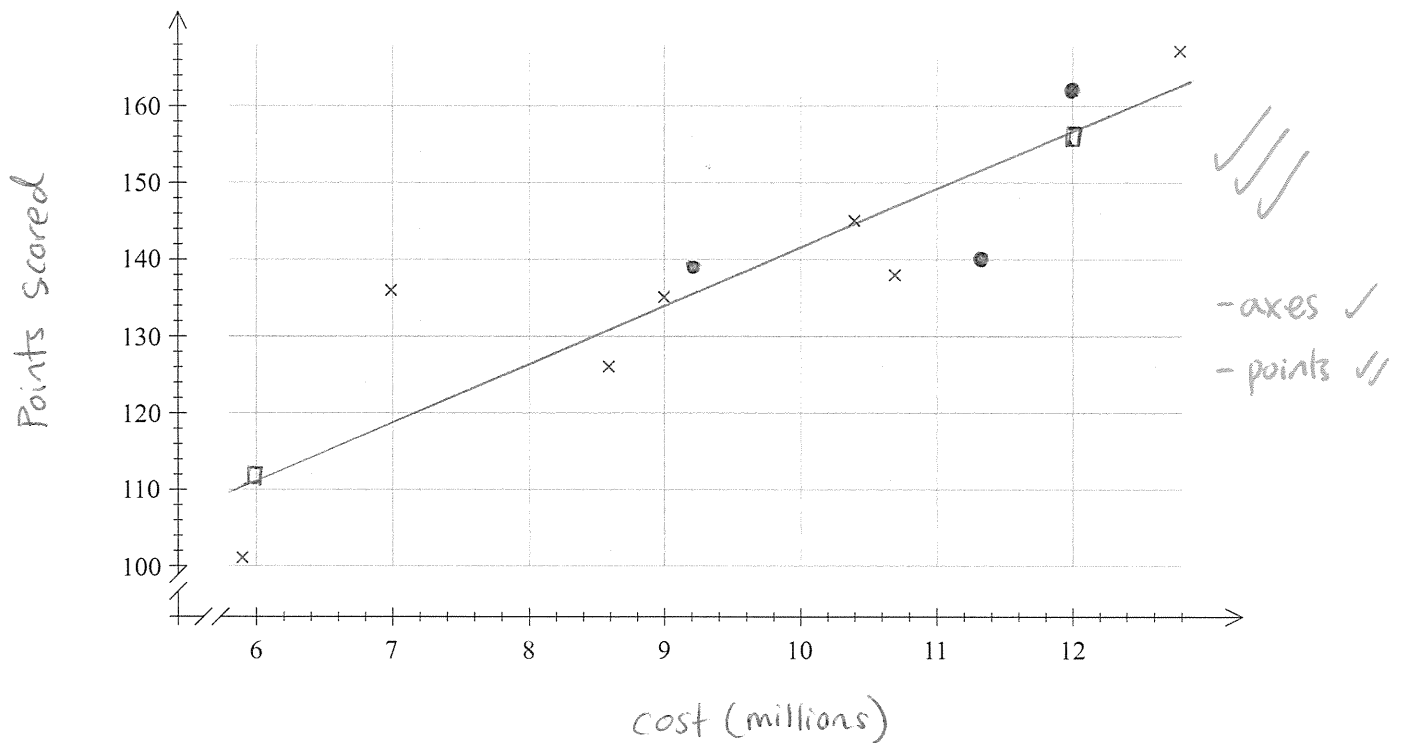
(a) State the explanatory variable.

[1]

Player cost ✓

(b) Complete the scatterplot below by plotting the **last 3 data points** and labelling the horizontal axis and the vertical axis clearly.

[3]



(c) Calculate the correlation coefficient, r and comment briefly on the relationship between the variables.

[4]

$$r = 0.8928 //$$

strong ✓
positive ✓

- (d) (i) Determine the equation for the least-squares line that models these data. State the slope and vertical intercept. [2]

$$\hat{y} = 7.6x + 65.4 \quad \checkmark\checkmark$$

- (ii) Draw the line from (d)(i) on the scatterplot in part (b) indicating two calculated points on the graph. [2]

$$(6, 111) \quad (12, 156.6) \quad \text{See points } \square \quad \checkmark\checkmark$$

- (iii) Interpret the slope of the least-squares line. [2]

For every million pound increase in price
the number of points earned increases by 7.6.

$\checkmark\checkmark$

- (e) Calculate the coefficient of determination and interpret it. [2]

0.7971 \rightarrow 79.7% of the variation in
fantasy points can be explained by
the price of the player. $\checkmark\checkmark$

- (f) Estimate the total points a player costing 8 million pounds would score. Comment on the reliability of this estimate. [3]

$$\hat{y} = 7.6(8) + 65.4$$

$$= 126.2 \quad \checkmark$$

$$\approx 126 \text{ points.}$$

Interpolation \checkmark
reliable \checkmark

- (g) The participant concluded that because of the strength of the correlation, "the higher a player's transfer cost the more points that player will score". Comment on the appropriateness of this statement. [2]

Although there is a strong correlation this
comment is incorrect as correlation does not
imply causation.

$\checkmark\checkmark$

3. (4 marks)

A study into the effectiveness of a pain relief drug was conducted. The response time (R minutes) was measured for different doses of the drug (D milligrams). The results of the study were used to obtain the least squares regression line $R = -8.54D + 45.55$, and the coefficient of determination was found to be 0.961.

- (a) Will the correlation coefficient between D and R be positive or negative? Give a reason for your answer. [2]

Negative, as the gradient is negative

- (b) Determine the correlation coefficient between D and R . [2]

$$= -\sqrt{0.961}$$

$$= -0.9803$$

4. (8 marks)

Five hundred University students were classified according to their personality (introvert or extrovert) and were then asked about their hobby preference (reading, gardening, exercise or watching TV).

Personality	Hobby				TOTAL
	Reading	Gardening	Exercise	Watch TV	
Introvert	42	50	22	86	200
Extrovert	189	31	45	35	300
TOTAL	231	81	67	121	500

(a) Complete the missing entries in the table. [2]

(b) Which variable is the explanatory variable? [1]

Personality

(c) Construct a percentage two-way table that will help identify whether hobby preference is associated with personality. **Round values to the nearest percentage.** [3]

Personality	Hobby			
	Reading	Gardening	Exercise	Watch TV
Introvert	21	25	11	43
Extrovert	63	10	15	12

(d) Is there an association between the response and explanatory variables? Provide evidence to support your decision. [2]

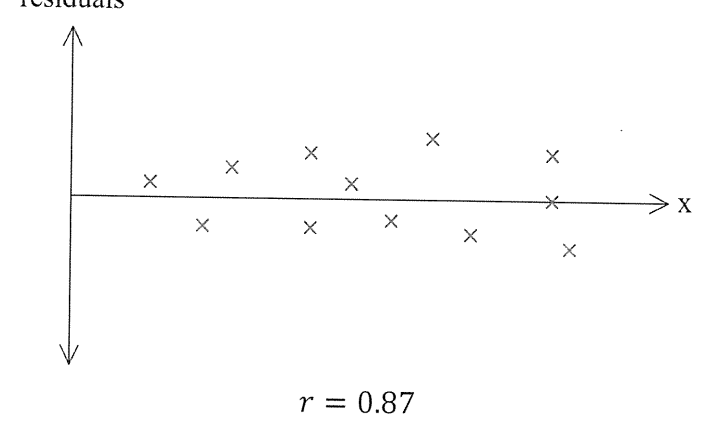
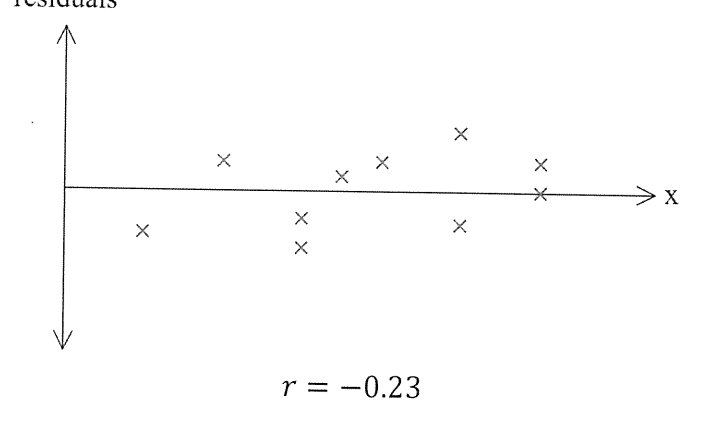
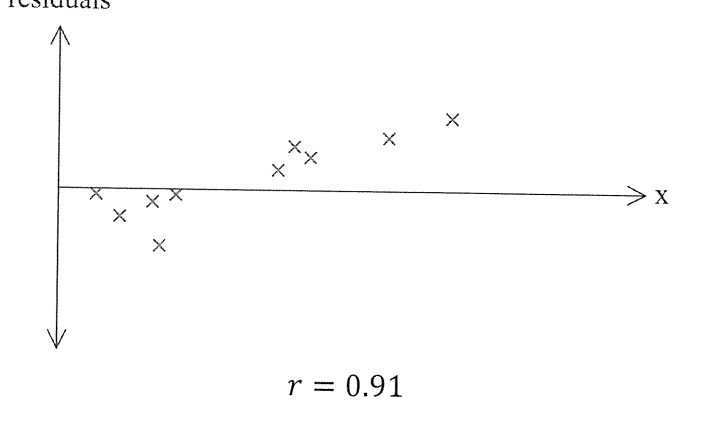
Yes, there was a large disparity in % of students who enjoyed "reading", "gardening" and "watching TV".

Introverted people most commonly enjoyed "watching TV" (43%) and extroverted people most commonly enjoyed "Reading" (63%).

5. (10 marks)

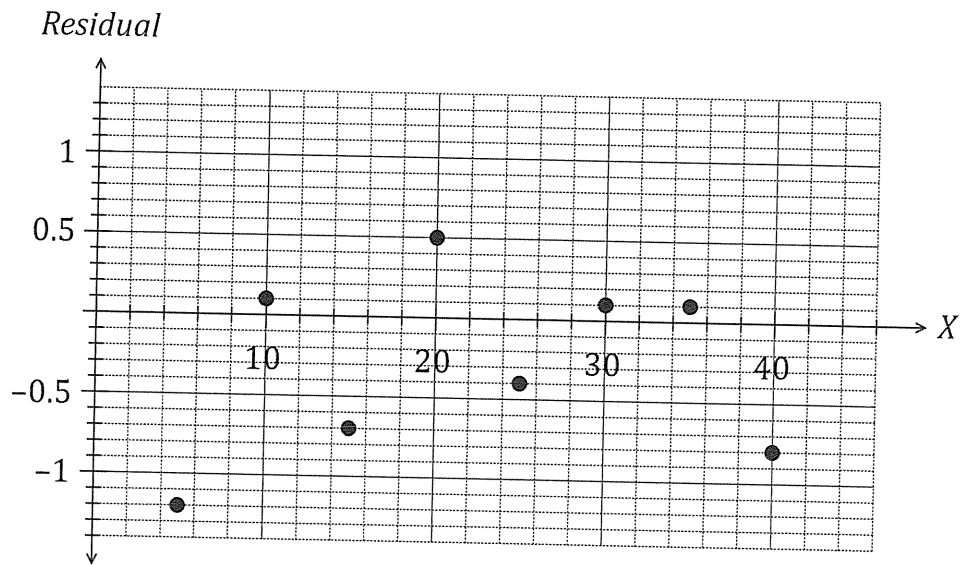
- (a) Three different sets of data were collected. For each set, the line of regression, correlation coefficient and residuals were determined. Shown below are the residual plots for each set of data, along with the correlation coefficient.

In each case, state (with reasoning) whether the linear regression model used would be suitable for prediction purposes. [6]

<p>residuals</p>  <p>$r = 0.87$</p>	<p>Is the model appropriate?</p> <p>Yes</p> <p>Reason</p> <p>Strong r-value Random residuals</p>
<p>residuals</p>  <p>$r = -0.23$</p>	<p>Is the model appropriate?</p> <p>No</p> <p>Reason</p> <p>- random residuals however very weak r-value.</p>
<p>residuals</p>  <p>$r = 0.91$</p>	<p>Is the model appropriate?</p> <p>Yes</p> <p>Reason</p> <p>- Linear model is appropriate but line of best fit has been incorrectly calculated.</p>

- (b) A linear model was fit to a set of data (X, Y) and the equation of the least squares regression line was found to be $\hat{Y} = 1.25X + 20.72$.

A plot of the residuals for this model is shown on the axes below.



Use the least squares regression line and the residual plot to determine the **actual** value of Y when $X = 15$. [3]

$$\text{residual} = y - \hat{y}$$

$$\begin{aligned} x = 15 \quad y &= 1.25(15) + 20.72 \\ &= 39.47 \end{aligned}$$

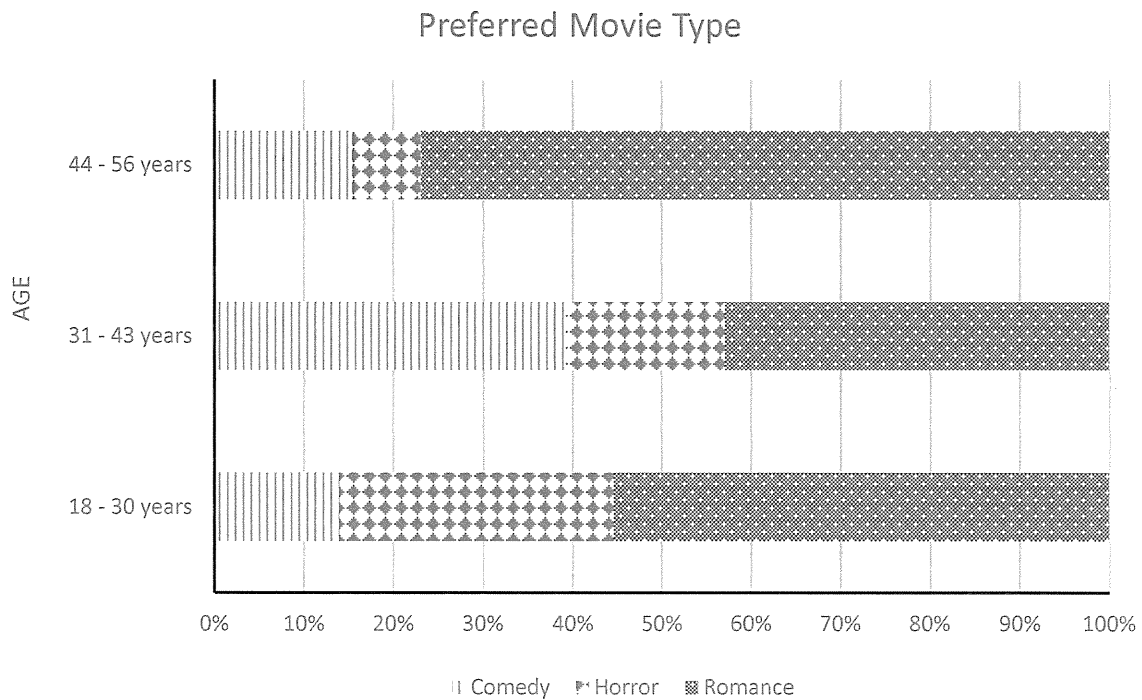
$$\text{residual} = -0.7$$

$$-0.7 = y - 39.47$$

$$y = 38.77$$

6. (3 marks)

The proportional bar graph below shows the preferred movie type for a group of people aged between 18 and 56 years.



Discuss whether any association appears to exist between the preferred movie type and age of person surveyed. Justify your decision.

Yes, as age increases there is a decrease in the percentage of people watching horror films.